

Escalon Digital Solutions

# E6 Series

*For Uncompromising Quality in Fundus Digital Imaging...*

*The Escalon Digital Solutions E6 Series utilizes dual imaging sensors to create a high-resolution solution that maximizes sensitivity and provides the very best in color fundus imaging and fluorescein angiography. The dedicated monochromatic imaging sensor doubles resolution compared with single-camera solutions and captures at full light intensity resulting in clear, bright fluorescein angiograms, even during early and late stages. We invite you to see the difference for yourself.*

**3072 x 2048 Full-Frame CCD Sensor Produces Excellent Color and Fluorescein Image Quality**

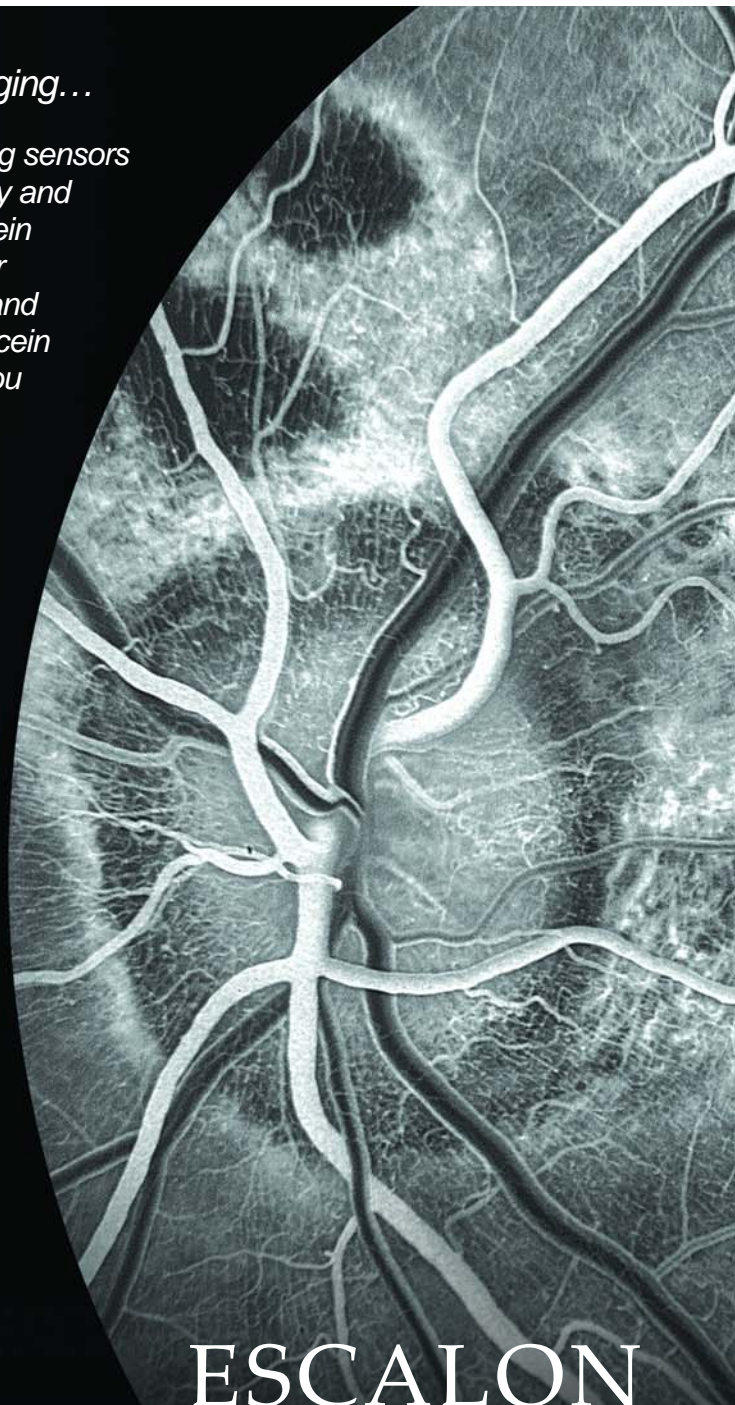
**Instant Image Capture**

**Efficient and Powerful OphthaVision™ Software with Hotkey Image Enhancements, Stereo Pair Builder, Auto EyeMap Montage Feature, and More**

**Calibrated Measurement Tools Including PDT Planning and MPS Ring Overlay**

**Compatible with Most Existing Fundus Cameras**

**Scalable and Secure Connectivity, Easily Networked and DICOM Compatible**



**ESCALON**  
**Digital Solutions**  
OPHTHALMIC DIGITAL IMAGING



# Escalon Digital Solutions E6 Series

Not all digital imaging systems are created equal. Explore the Escalon Difference...

## Image Processing

Our unique patent-pending image processing algorithms are specifically designed for fundus imaging to optimize both color and fluorescein image quality, while still providing for instantaneous image capture.

## 6 Megapixel CCD Sensors

Unlike other competitive digital imaging systems, the Escalon Digital Solutions E6 Series Dual Camera System utilizes dedicated color and monochromatic imaging sensors. The 3072 x 2048 pixel CCD full-frame sensors optimize resolution and sensitivity (see below), and produce outstanding quality fundus images.

## OphthaVision™ Imaging and Angiography Software

Feature-rich OphthaVision™ software is easy and efficient to use, ensuring a quick learning curve and streamlined patient flow. Intuitive and powerful tools give instant image availability for review, patient education, and treatment, on-screen measurement, magnification and other analysis tools, easy creation of stereo pairs, hotkey image enhancements, Auto EyeMap montage, and more.

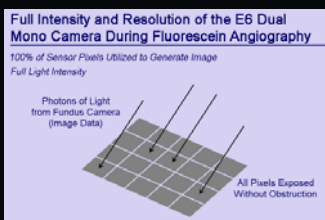
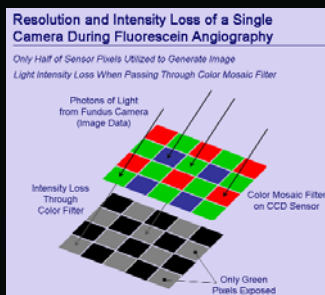
## See the Difference of Dual Camera Configuration

Higher sensitivity leads to better images. By utilizing two cameras – one color and one monochrome – the Escalon Digital Solutions E6 Dual Camera System maximizes sensitivity and provides particularly outstanding fluorescein angiograms, even in low light situations.

In single camera systems, a color imaging sensor is used to capture both color and monochromatic images. While the entire sensor may contain up to 6 megapixels, each pixel is dedicated to capturing a single color: red, green, or blue.

The difficulty in capturing a fluorescein angiogram with a color imaging sensor is that only the green pixels are utilized to capture monochromatic information, thereby essentially reducing the actual number of pixels used by about half. The intensity of the light is also reduced when passed through the color mosaic filter inherent in color imaging sensors. This results in lower sensitivity that can make images appear grainy, particularly at extreme low light levels (such as early and late-session angiograms).

By utilizing a dedicated monochrome imaging sensor for fluorescein angiograms, the Escalon Digital Solutions E6 Dual Camera System fully utilizes each pixel at full light intensity, for sharp and clear angiograms that stand out above all others.



## Specifications

<b>Capture Hardware</b>	3072 x 2048 Pixel High-Resolution CCD Sensor Color Camera 3072 x 2048 Pixel High-Resolution CCD Sensor Monochrome Camera Opto-Electrical Interface to Fundus Camera High-Speed Data Transfer Cabling and Computer Interface
<b>Software</b>	OphthaVision™ Imaging and Angiography Software Windows XP Professional
<b>Computer</b>	Intel Pentium Processor 2048 MB RAM (Min.) Ultra High-Speed SCSI 15,000 RPM Hard Drive 500 GB Redundant Mirror SATA 7,200 RPM Hard Drive DVD Archive Drive CDRW Drive 20" Planar High-Resolution Flat Panel LCD Monitor Tower or Portable Configuration
<b>Accessories</b>	Photo Quality Inkjet or Dye Sublimation Printer System Cart
<b>Warranty</b>	1-Year Parts and Labor (Extended Warranties Available)

Note: As a result of efforts to deliver ever-higher performance, specifications may change without notice. All brand names are trademarks of their respective owners.

# ESCALON

## Digital Solutions

OPHTHALMIC DIGITAL IMAGING

800-676-0043 | 262-821-2022

[www.escalondigitalsolutions.com](http://www.escalondigitalsolutions.com)

© 2006 Escalon Digital Solutions. All Rights Reserved.