

Escalon Digital Solutions  
**E11 Series**

*For The Highest Resolution In Fundus Digital Imaging...*

*The Escalon Digital Solutions E11 Series offers outstanding color and fluorescein images by utilizing a 4008 x 2672 resolution full-frame imaging sensor. The single camera package is extremely compact and connects directly to most fundus cameras. Combined with the power of OphthaVision™ software, the Escalon Digital Solutions E11 Series is a complete imaging solution of exceptional quality.*

**4008 x 2672 Full-Frame CCD Sensor for Ultra High Resolution Imaging**

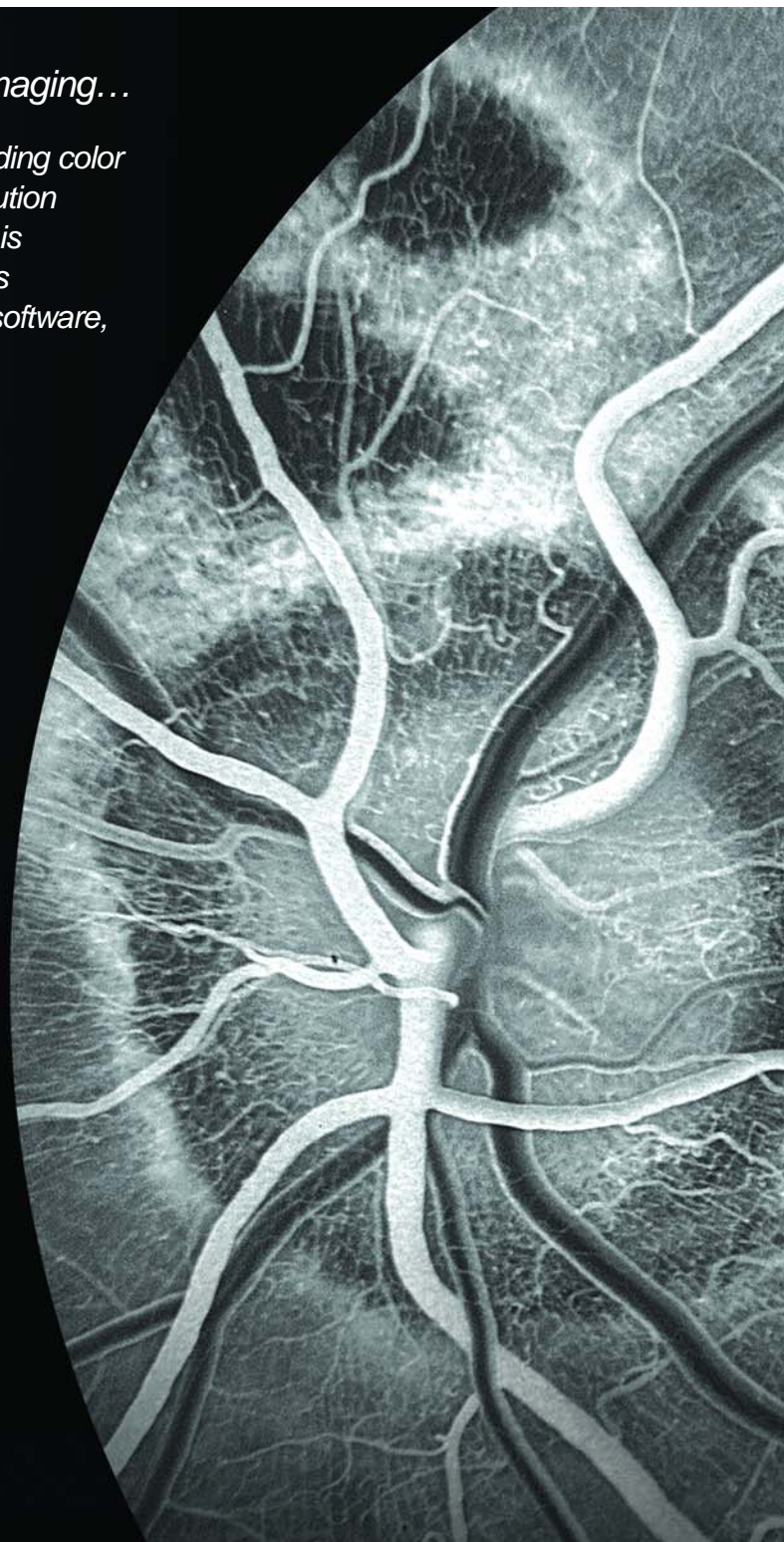
**Instant Image Capture**

**Efficient and Powerful OphthaVision™ Software with Hotkey Image Enhancements, Stereo Pair Builder, Auto EyeMap Montage Feature, and More**

**Calibrated Measurement Tools Including PDT Planning and MPS Ring Overlay**

**Compatible with Most Existing Fundus Cameras**

**Scalable and Secure Connectivity, Easily Networked and DICOM Compatible**



**ESCALON**  
Digital Solutions  
OPHTHALMIC DIGITAL IMAGING



# Escalon Digital Solutions E11 Series

*Not All Digital Imaging Systems Are Created Equal.  
Explore The Escalon Difference...*

## **Image Processing**

Our unique patent-pending image processing algorithms are specifically designed for fundus imaging to optimize both color and fluorescein image quality, while still providing for instantaneous image capture.

## **Ultra-High Resolution CCD Sensor**

The Escalon Digital Solutions E11 Series incorporates the latest in CCD sensor technology. The full-frame sensor size eliminates the need for optical reduction of the image.

## **OphthaVision™ Imaging and Angiography Software**

Feature-rich OphthaVision™ software is easy and efficient to use, ensuring a quick learning curve and streamlined patient flow. Intuitive and powerful tools give instant image availability for review, patient education, and treatment, on-screen measurement, magnification and other analysis tools, easy creation of stereo pairs, hotkey image enhancements, Auto EyeMap montage, and more.

## Specifications

<b>Capture Hardware</b>	4008 x 2672 Pixel Full-Frame Ultra High-Resolution CCD Sensor Color Camera Opto-Electrical Interface to Fundus Camera High-Speed Data Transfer Cabling and Computer Interface
<b>Software</b>	OphthaVision™ Imaging and Angiography Software Windows XP Professional
<b>Computer</b>	Intel Pentium Processor 2048 MB RAM (Min.) Ultra High-Speed SCSI 15,000 RPM Hard Drive 500 GB Redundant Mirror SATA 7,200 RPM Hard Drive DVD Archive Drive CDRW Drive 20" Planar High-Resolution Flat Panel LCD Monitor Tower or Portable Configuration
<b>Accessories</b>	Photo Quality Inkjet or Dye Sublimation Printer System Cart
<b>Warranty</b>	1-Year Parts and Labor (Extended Warranties Available)

Note: As a result of efforts to deliver ever-higher performance, specifications may change without notice. All brand names are trademarks of their respective owners.

**ESCALON**  
**Digital Solutions**  
OPHTHALMIC DIGITAL IMAGING

800-676-0043 | 262-821-2022  
[www.escalondigitalsolutions.com](http://www.escalondigitalsolutions.com)

© 2006 Escalon Digital Solutions. All Rights Reserved.